


**UNDER CABINET
FIXTURES**

ECO Matte White Finished 12" 18" 24" 30"

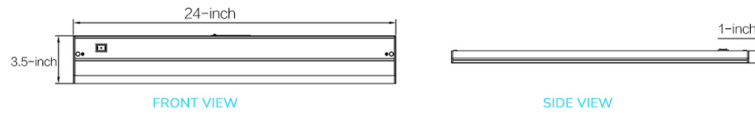
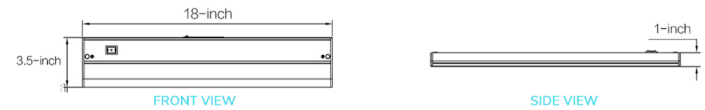
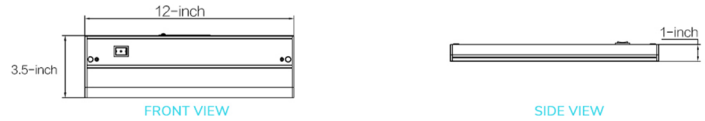
SPECIFICATIONS

FIXTURE COLOR	White
CRI	> 90
HOUSING	Aluminum/Plastic
POWER	120V
LENS	Frosted Polycarbonate
BEAM	120°
COLOR (K)	2700, 3000, 3500, 4000, 5000

BENEFITS

- This model is **HARDWIRED ONLY, NO PLUG-IN OPTION AVAILABLE**
- CRI 90 provides color accuracy, 1" thickness that hides perfectly under the cabinet
- Multiple knock outs for optimized hardwire installation
- Cost-effective LED light source, helps save up more money than halogen and incandescent products
- Dimmable with most wall dimmer switches. Dimmers tested compatible:

GE 18023, Lutron Diva DVCL-153P, Lutron Diva DV-600P, Lutron Skylark SLV-600P


CERTIFICATIONS


Based on 12 hours of use per day.

Application Notes

1. Operating temperature range between -20°C and +45°C (-4°F and +113°F)
2. Not for use with emergency light fixtures or exit lights
3. Not for use in totally enclosed fixture
4. Suitable for damp location

This device complies with Part 15 of the FCC rules and has been tested and found to comply with the limits for a Class B digital device. These limits are designed to provide reasonable protection against harmful interference in a residential installation. This equipment uses and can radiate radio frequency energy and, if not installed and used in accordance with the instructions, may cause harmful interference to radio communications. Any changes or modifications not expressly approved by the manufacturer could void the user's authority to operate the equipment.

Under Cabinet Fixtures

ORDERING INFORMATION

UC Series

Part Number	Wattage (W)	Voltage (V)	Base	Equivalent (W)	CCT ¹	Typical Lumens ²	CRI ³	Dim	Beam	Weight (lbs)	Case Quantity	LDL	Lighting Facts
UC12-05-XX-GI	5	120	GX23	13	4000	375	>80	NO	OMNI	0.16	24	YES	NO
UC18-08-XX-GI	8	120	GX23	13	5000	600	>80	NO	OMNI	0.16	24	YES	NO
UC24-12-XX-GI	12	120	GX23	13	4000	900	>80	NO	OMNI	0.16	24	YES	NO
UC30-16-XX-GI	16	120	GX23	13	5000	1200	>80	NO	OMNI	0.16	24	YES	NO

1. Thermally stable typical CCT (±10%) 2. Thermally stable typical lumens when tested in REWIRE configuration. 3. CRI - Color Rendering Index
4. Rated wattage base on testing done in REWIRE configuration. 5. When installed in REWIRE configuration.

ACCESSORIES

Included



Screws&Anchors

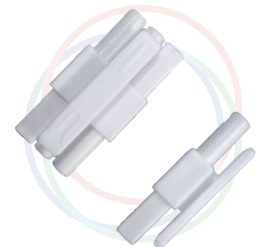


manual

Optional



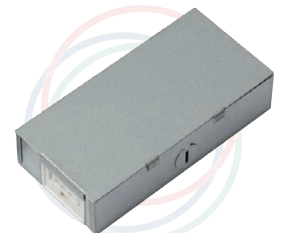
POWER CORD



END-TO-END CONNECTOR
(1 included with fixture)



PLASTIC JUNCTION BOX



METAL JUNCTION BOX



3/8 in. Wire Connector Attached



LINK CABLE

DESCRIPTION	DIMENSIONS
Under Cabinet Power Cord	L:72in.
Under Cabinet End Connector	L:1in.
Under Cabinet 3/8in. Wire Connector	L:1.5in. W:0.67in. H:0.35in.
Under Cabinet Junction Box - Plastic	L:4in. W:2in. H:1in.
Under Cabinet Junction Box - Metal	L:4in. W:2in. H:1in.
Under Cabinet Link Cable 6in.	L:6in.
Under Cabinet Link Cable 12in.	L:12in.
Under Cabinet Link Cable 24in.	L:24in.
Under Cabinet Link Cable 36in.	L:36in.
Under Cabinet Link Cable 48in.	L:48in.
Under Cabinet Link Cable 72in.	L:72in.